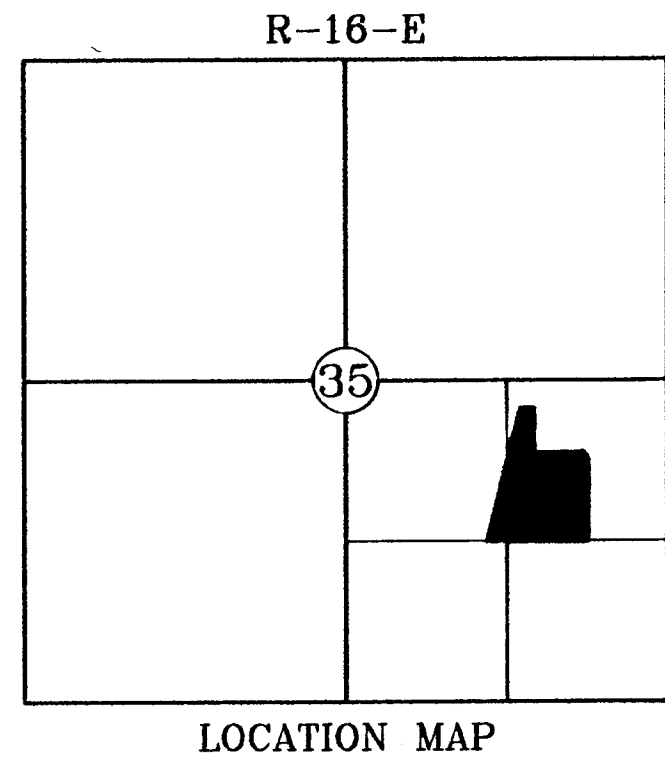


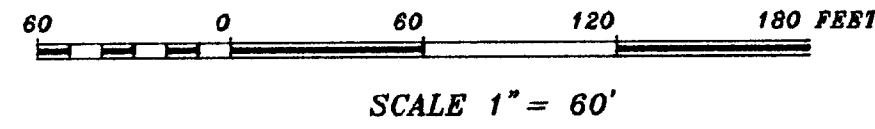
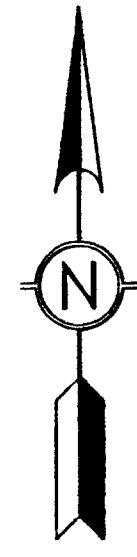
SALTSMAN'S ORCHARD SUBDIVISION

A PART OF THE N1/2 OF THE SE1/4 OF SEC. 35, T10N, R16E, McINTOSH COUNTY, OKLAHOMA.



T 10 N

LOCATION MAP



BEARINGS ARE BASED ON THE EAST LINE OF THE SE1/4 OF SECTION 35, T10N, R16E, McINTOSH COUNTY, OKLAHOMA, BEARING BEING S00°23'50\" W.

LEGEND

- B/L = BUILDING LINE
- U/E = UTILITY EASEMENT
- P.O.B. = POINT OF BEGINNING
- = SET 3/8" I.P.

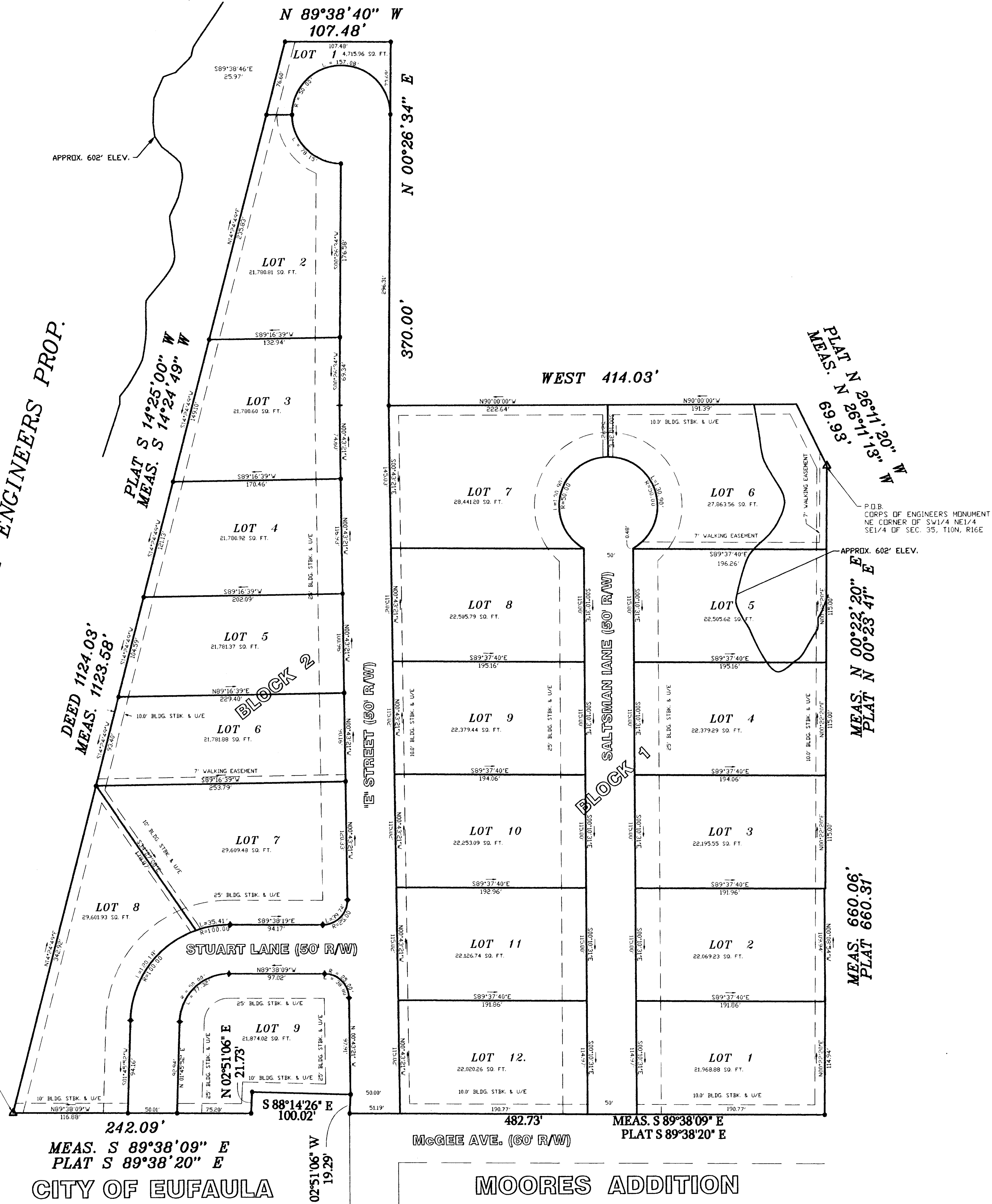
THIS PLAT MEETS OR EXCEEDS THE OKLAHOMA MINIMUM STANDARDS FOR THE PRACTICE OF LAND SURVEYING AS ADOPTED BY THE OKLAHOMA STATE BOARD OF REGISTRATION FOR PROFESSIONAL ENGINEERS AND LAND SURVEYORS.

OWNER:

SALTSMAN'S ORCHARD L.L.C.
 1000 N. E. STREET, EUFAULA, OK 74432
 Tel: (918) 519-4014

CORPS OF ENGINEERS PROP.

FOUND CORPS OF ENGINEERS MONUMENT



MEAS. S 89°38'09" E
 PLAT S 89°38'20" E
 CITY OF EUFAULA

MCGEE AVE. (50' R/W)

MOORES ADDITION



BASILE E. SCOTT JR., PLS #545

SURVEYOR/ENGINEER

SCOTT & ASSOCIATES, INC.
 Land Surveyors & Engineers
 CA. #1041 (PLS, PE) Exp. 6/30/07
 901-B Callahan Street
 Muskogee, OK 74403
 Tel: (918) 682-7577